



Total Solution Provider in Saw Device

SA70C2D1

70MHz IF SAW Filter

9.58MHz Bandwidth

Revision 0: 30. Oct. 2007.



-
- Electrical Characteristics
 - Package Dimensions
 - Testing Environment
 - Frequency Characteristics
-

SAWNICS Inc.

460 Cheonheung-ri, Seonggeo-eup, Cheonan-si, Chungcheongnam-do, 330-836 / Korea.
Tel: +82 41 550 9372 / Fax: +82 41 550 9399 / www.sawnics.com

□ Electrical Characteristics

Maximum Ratings

Parameters Description	Unit	Minimum	Typical	Maximum
Operation Temperature Range	°C	-10	-	50
Storage Temperature Range	°C	-40	-	85
Maximum DC Voltage	V	-	-	10
Maximum Input Power	dBm	-	-	10
Source Impedance (single ended) ⁽¹⁾	Ω	-	50	-
Load Impedance (single ended) ⁽¹⁾	Ω	-	50	-
Package type & size	D1			
Length x Width	mm ²	-	20.0 x 9.8	-
Height	mm	-	-	1.8

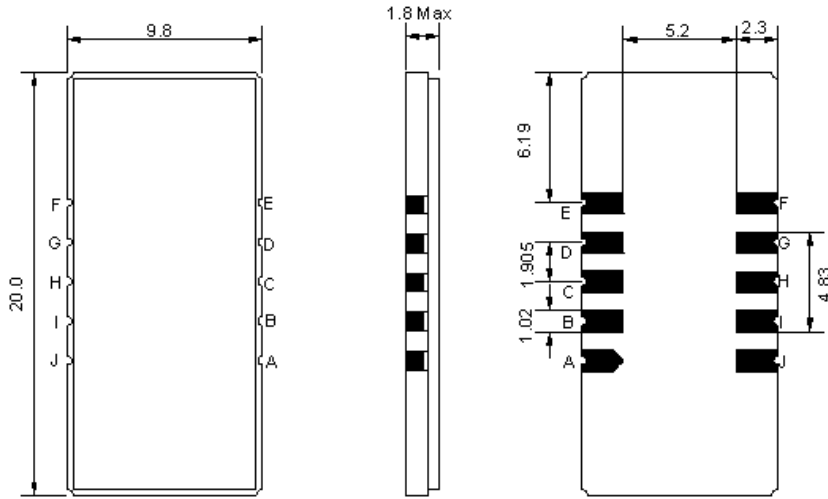
Electrical Specification

Parameters Description	Unit	Minimum	Typical	Maximum
Center Frequency (Fo)	MHz	-	70.0	-
Insertion Loss at Fo	dB	-	19.4	22.0
Amplitude Ripple within fo ±4.4 MHz	dB _{p-p}	-	0.6	1.0
Group Delay Variation within fo ±4.4 MHz	nsec	-	50	80
Absolute Delay at Fo	μsec	-	2.48	-
Temperature Coefficient	ppm/°C	-	-72	-
Bandwidth at -1.0 dB	MHz	9.2	9.3	-
Bandwidth at -3.0 dB	MHz	-	9.58	-
Bandwidth at -10.0 dB	MHz	-	10.05	10.1
Bandwidth at -25.0 dB	MHz	-	10.53	11.7
Bandwidth at -40.0 dB	MHz	-	10.79	-
Lower Sidelobe	dB	50	55	-
Upper Sidelobe	dB	50	55	-

Notes : (1) With Matching Network (Ref. Testing Environment Circuit as shown below).

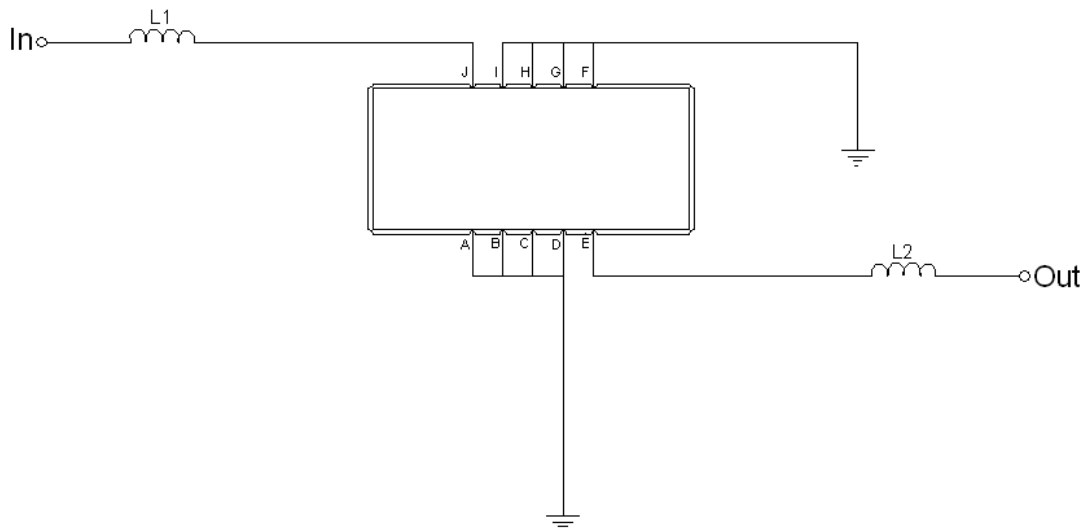
Those impedances could be modified with different impedance values and/or structures, if necessary.

Package Dimensions



Pin Description	
A, B, C, D, F, G, H, I	Ground
J	Input
E	Output

Testing Environment



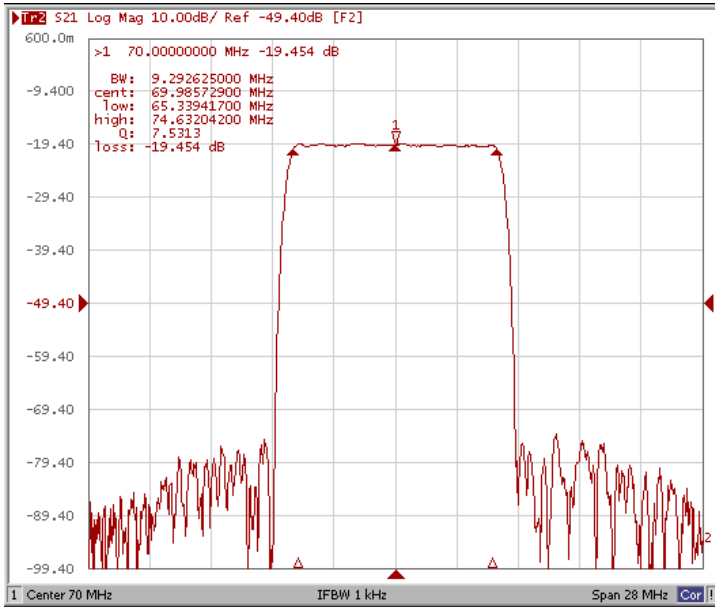
Test Fixture & Values	
Input	L1=15nH
Output	L2=15nH
Source/Load Impedance	50 Ω



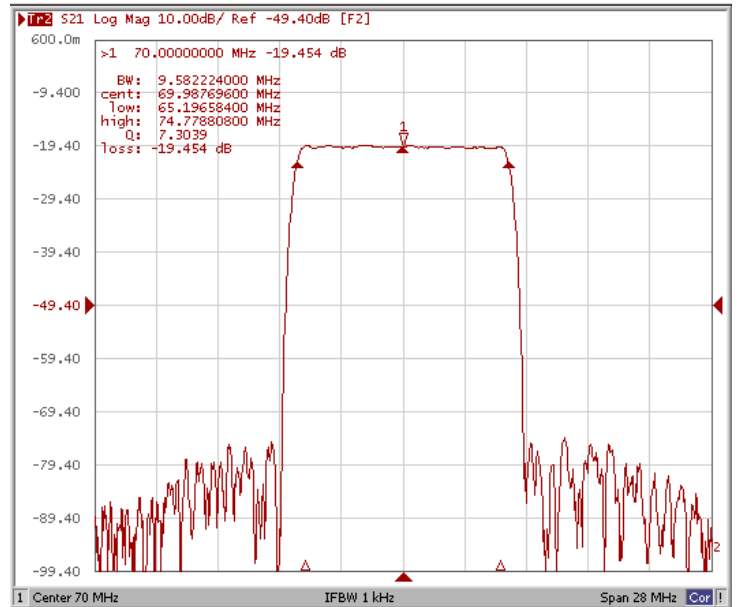
Frequency Characteristics

Frequency Response

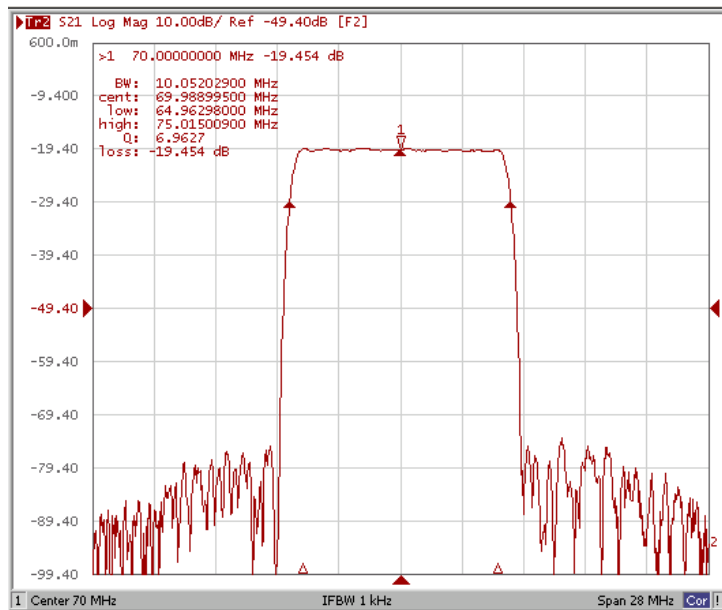
Bandwidth at -1.0 dB



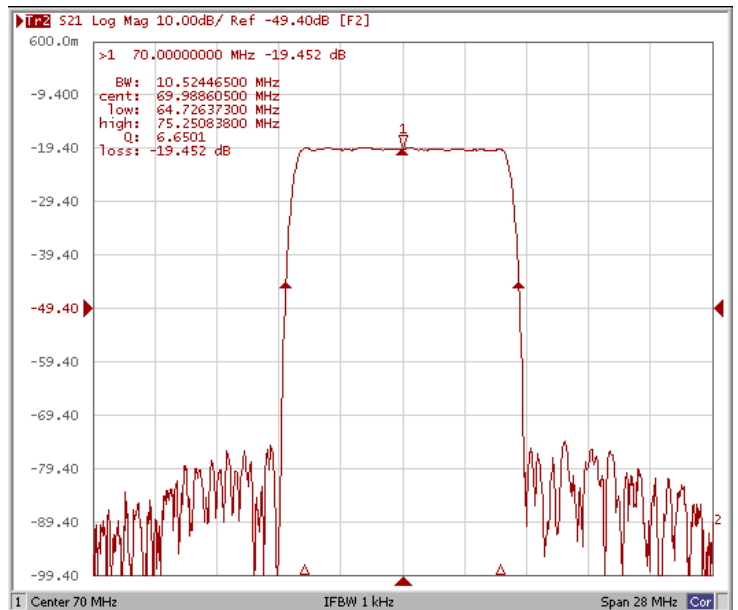
Bandwidth at -3.0 dB



Bandwidth at -10.0 dB



Bandwidth at -25.0 dB

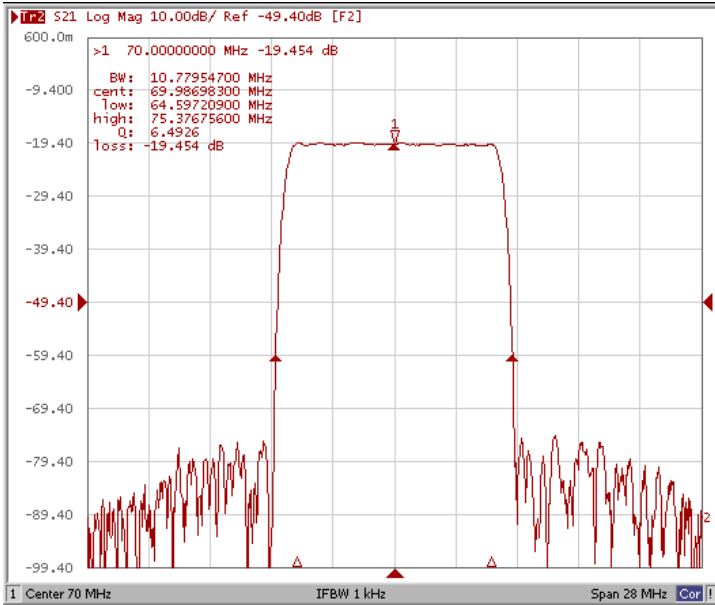




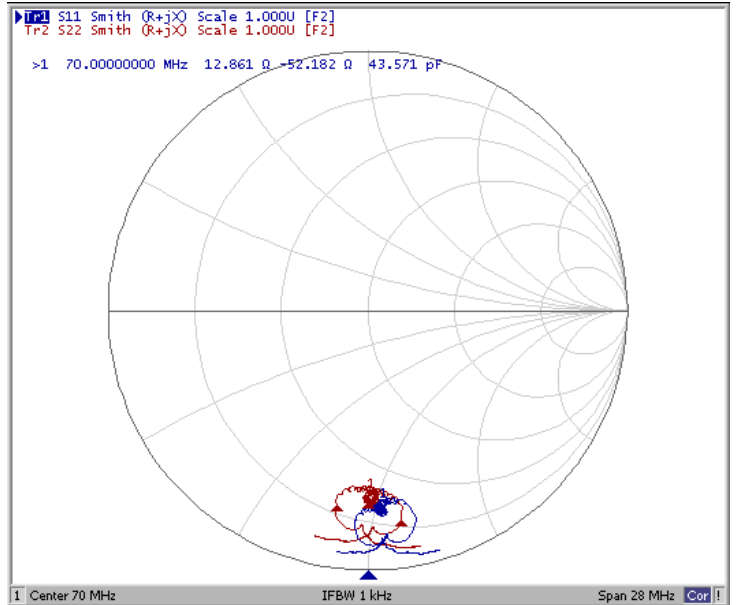
Frequency Characteristics

Frequency Response

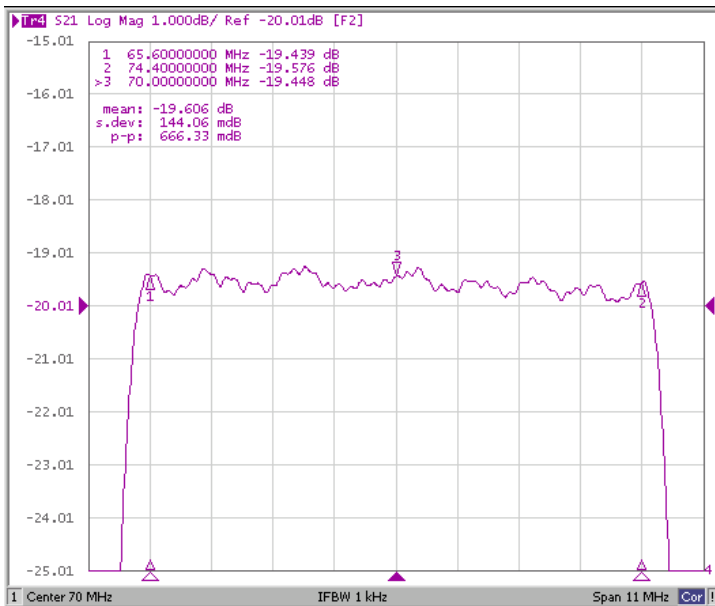
Bandwidth at -40.0 dB



Smith Chart



Ripple



Group Delay Variation

